

VO-AG SHOP MECHANICAL FLOOR PLAN

SCALE: 1/8" = 1'-0"

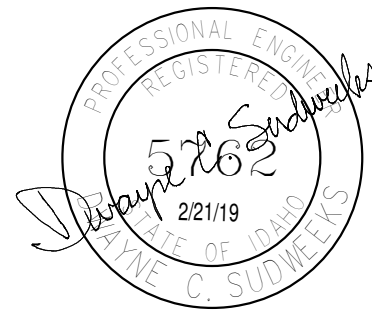


PLAN NOTES:

- EXISTING CEILING DIFFUSERS AND/OR GRILLES TO REMAIN. EXISTING DUCTWORK ABOVE CEILINGS TO REMAIN. CONTRACTOR TO FIELD VERIFY EXACT SIZES AND LOCATIONS OF PROTECT DURING CONSTRUCTION.
- EXISTING UNIT HEATER TO REMAIN. PROTECT UNIT AND FLUES DURING CONSTRUCTION. MAINTAIN CONNECTION TO EXISTING LP GAS PIPING.
- EXISTING UNIT HEATER TO REMAIN. PROTECT DURING CONSTRUCTION. DISCONNECT AND REMOVE EXISTING FLUE THRU WALL FROM UNIT. CONNECT NEW FLUE(S) TO EXISTING UNIT AND RISE UP THRU EXISTING ROOF WITH WEATHER CAP. SEAL ROOF PENETRATION WATER TIGHT.
- EXISTING VEHICLE EXHAUST DUCTWORK, AND FLEXIBLE HOSES TO REMAIN. PROTECT DURING CONSTRUCTION. RELOCATE ANY EXISTING CABLES AND CRANKS AS REQUIRED FOR NEW DOWNWAYS AND/OR CONSTRUCTION. CONTRACTOR TO FIELD VERIFY EXISTING CONDITIONS.
- EXISTING EXHAUST VENT SET AND DUCT THRU EXTERIOR WALL TO REMAIN. PROTECT DURING CONSTRUCTION AND MAINTAIN OPERATION.
- PROVIDE AND INSTALL NEW UP-FLOW FURNACE AS SPECIFIED. MOUNT FURNACE ON FLOOR WITH SIDE CONNECTION TO RETURN DUCT. PROVIDE FILTER SECTION IN RETURN DUCT. REFER TO DETAIL H1P3.1 FOR TYPICAL GAS LINE CONNECTION WITH SHUT-OFF VALVE AND FLEXIBLE HOSE. RISE (2) 3" Dia. VENT UP FROM FURNACE AND EXTEND THRU ROOF WITH CONCENTRIC TYPE FITTING. REFER TO DETAIL A1M3.2 FOR INSTALLATION OF FURNACE VENTS. REFER TO DETAIL N1M3.1 FOR TYPICAL FURNACE PIPING CONNECTIONS.
- MOUNT RETURN GRILLE AT 10' ABOVE FLOOR. COORDINATE GRILLE LOCATION WITH WALL MOUNTED SENSOR. DROP 18x12 DUCT DOWN AND CONNECT TO SIDE OF FURNACE WITH FILTER SECTION. REFER TO DETAIL H1M3.1 FOR TYPICAL FILTER SECTION CONSTRUCTION.
- EXISTING WALL MOUNTED THERMOSTAT AND/OR SENSOR TO BE RELOCATED. MOUNT ON NEW WALL NEAR DOOR AND RECONNECT TO RELOCATED UNIT HEATER. EXTEND EXISTING CONTROL WIRING AS REQUIRED FOR NEW LOCATION.
- PROVIDE AND INSTALL NEW SEPARATED COMBUSTION UNIT HEATER AS SPECIFIED. SUPPORT UNIT FROM ROOF STRUCTURE. EXTEND VENTS THRU EXTERIOR WALL WITH CONCENTRIC TYPE FITTING. REFER TO DETAIL L1M3.1 FOR TYPICAL UNIT HEATER AND VENT INSTALLATION. REFER TO DETAIL H1P3.1 FOR TYPICAL LP GAS LINE CONNECTION WITH SHUT-OFF VALVE AND FLEXIBLE HOSE.
- MOUNT EXHAUST FAN ON ROOF AS SPECIFIED WITH ROOF CURB. DROP 18x16 DUCT DOWN THRU ROOF AND CONNECT TO EXHAUST GRILLE AT 6' BELOW ROOF STRUCTURE. REFER TO DETAIL D1M3.1 FOR TYPICAL INSTALLATION.
- PROVIDE NEW VEHICLE EXHAUST SYSTEM AS SPECIFIED. RUN DUCTWORK AT CEILING WITH 9" Dia. FLEXIBLE DUCTS COMPLETE WITH SLINGS, CABLE AND WALL MOUNTED HOOKS FOR COMPLETE SYSTEM. REFER TO DETAIL K1M3.1.
- MOUNT EXHAUST FAN BELOW ROOF AND SUPPORT WITH PLATFORM HUNG FROM ROOF STRUCTURE. CONNECT TO ROUND VEHICLE EXHAUST DUCTWORK WITH FLEXIBLE CONNECTION. EXTEND DISCHARGE DUCT THRU EXTERIOR WALL WITH LOUVER AS SPECIFIED. PROVIDE DUCT TRANSITIONS AS REQUIRED FOR CONNECTIONS. REFER TO DETAIL G1M3.1.
- PROVIDE WALL MOUNTED HOOKS FOR VEHICLE EXHAUST SYSTEM. REFER TO DETAIL K1M3.1 FOR TYPICAL HOOKS, CABLE AND DUCT INSTALLATION.
- RISE 8x8 OUTSIDE AIR DUCT UP THRU ROOF WITH ROOF CAP. PROVIDE MOTORIZED DAMPER, ACCESS DOOR AND MANUAL BALANCING DAMPER IN DUCT. REFER TO DETAIL F1M3.1 FOR TYPICAL DAMPER INSTALLATION.

gpc architects

18 N. Main St., Ste. 200
Driggs, Idaho 83422
208.354.8036
www.gpcarchitects.com



Ownership & Use of Documents

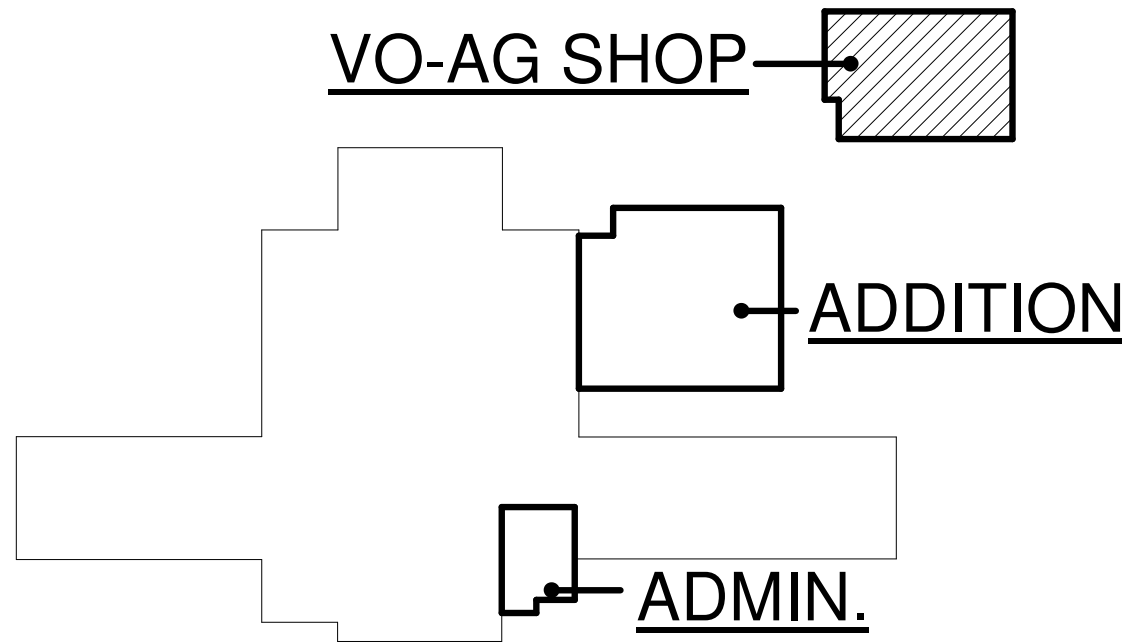
Drawings and specifications, as instruments of professional service are and shall remain the property of the architect. These documents are not to be used in whole or in part for any project or purposes whatsoever, without the prior specific written authorization of GPC Architects PLLC.



TETON SCHOOL DISTRICT 401
TETON HIGH SCHOOL ADDITION



KEY PLAN



revisions

| no. | description | date |
|-----|-------------|------|
| | | |
| | | |
| | | |
| | | |

project: 18003

date: 02/22/2019

VO-AG SHOP
MECHANICAL
FLOOR PLAN

sheet:

M1.2